



SWITCHES | SOCKET RANGE | DIMMER REGULATOR

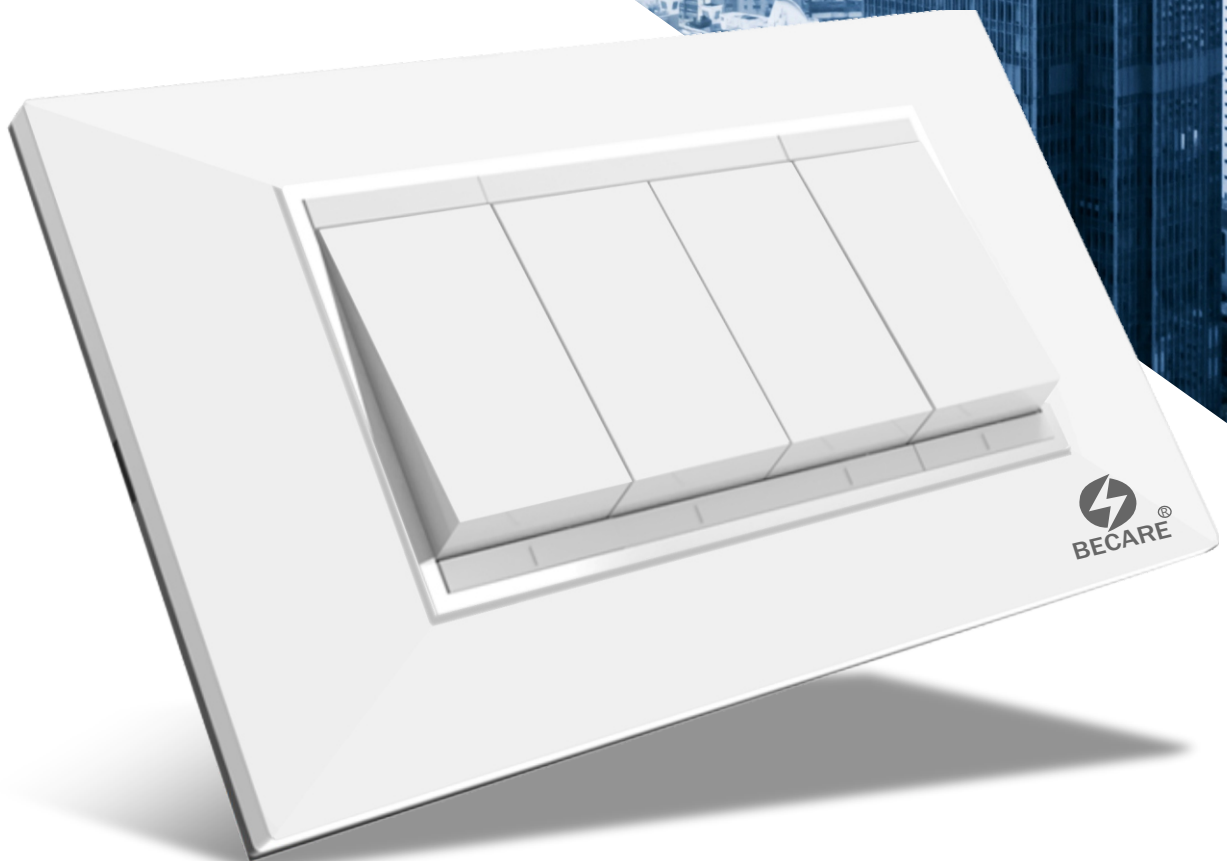
BATTEN HOLDER RANGE | PLUG TOPS RANGE

MODULAR PLATES | ROUND SHEETS

MODULAR GANG BOXES

# ECCENTRIC

SWITCHES

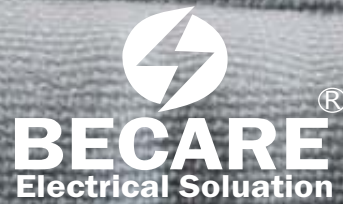


PRODUCT PRICE LIST  
1st January 2024



Creating higher standards

It's Time For a  
Beautiful  
**SWITCH**



## ABOUT US

**BECARE ELECTRIC** is a leading fast moving electrical accessories company and a power distribution equipment manufacturer with strong global footprint. We have focused on world class infrastructure, best in class technology, uncompromising quality standards and dynamic product innovation.

The company is equipped with modern sophisticated machineries. The production process is carefully monitored at every step. A name that creates a sense of Safety,

Reliability, Quality & Durability A good product is the Ultimate result of good raw material, efficient manufacturing process & excellent systems.

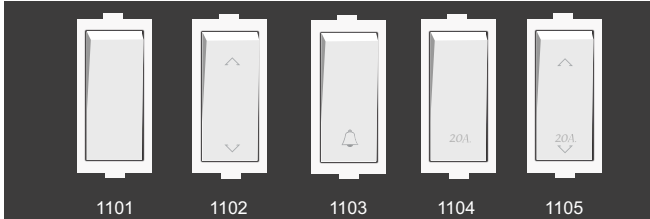
Aim of achieving higher standards of quality has earned us the coveted ISO 9001:2008 certification. Quality control is ongoing process in our organization. Each item undergoes a series of tests, Which finally makes product ready for the market.

The requirements of Safety, Reliability and Ease of Installation are the Key factor in all product design development. Because of all these, over a period ,

Name **BECARE ELECTRIC** has evoked in the whole of India.

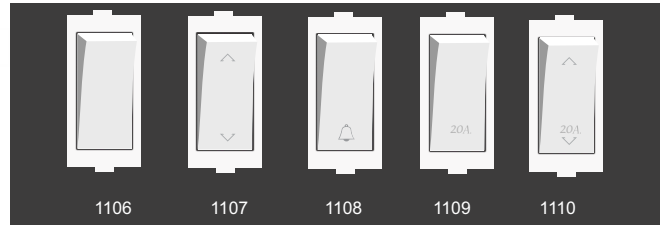


*The most Beautiful  
Switches ever!*

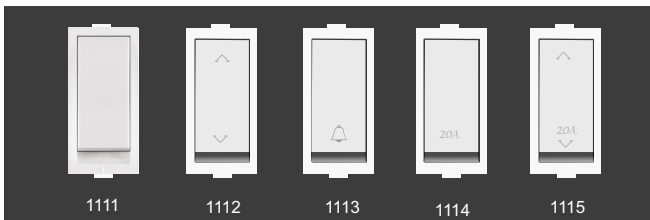


| CODE  | HSN CODE | ITEM                   | PKG | GLOSSY WHITE |
|---|----------|------------------------|-----|--------------|
| <b>10A/20A SWITCHES (ROCKER) 240V~ ( 1 MODULE )</b> |          |                        |     | — MRP/PC     |
| 1101  | 8536     | 1 Way Switch 10A       | 20  | ₹ 37.00      |
| 1102  | 8536     | 2 Way Switch 10A       | 20  | ₹ 60.00      |
| 1103  | 8536     | 1 Way bell push Switch | 20  | ₹ 58.00      |
| 1104  | 8536     | 1 Way Switch 20A       | 20  | ₹ 65.00      |
| 1105  | 8536     | 2 Way Switch 20A       | 20  | ₹ 80.00      |

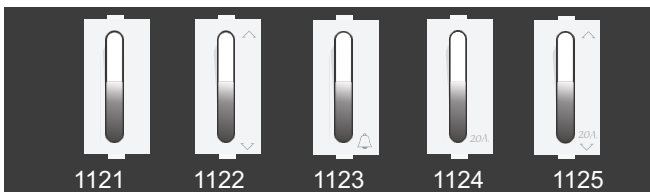
| CODE   | HSN CODE | ITEM                   | PKG | GLOSSY WHITE |
|--|----------|------------------------|-----|--------------|
| <b>10A/20A SWITCHES (ELEGANT) 240V~ ( 1 MODULE )</b> |          |                        |     | — MRP/PC     |
| 1106   | 8536     | 1 Way Switch 10A       | 20  | ₹ 37.00      |
| 1107   | 8536     | 2 Way Switch 10A       | 20  | ₹ 60.00      |
| 1108   | 8536     | 1 Way bell push Switch | 20  | ₹ 58.00      |
| 1109   | 8536     | 1 Way Switch 20A       | 20  | ₹ 65.00      |
| 1110   | 8536     | 2 Way Switch 20A       | 20  | ₹ 80.00      |



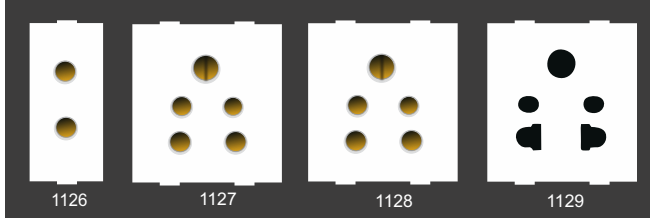
| CODE   | HSN CODE | ITEM                   | PKG | GLOSSY WHITE |
|--|----------|------------------------|-----|--------------|
| <b>10A/20A SWITCHES (FLATO) 240V~ ( 1 MODULE )</b> |          |                        |     | — MRP/PC     |
| 1111   | 8536     | 1 Way Switch 10A       | 20  | ₹ 37.00      |
| 1112   | 8536     | 2 Way Switch 10A       | 20  | ₹ 60.00      |
| 1113   | 8536     | 1 Way bell push Switch | 20  | ₹ 58.00      |
| 1114   | 8536     | 1 Way Switch 20A       | 20  | ₹ 65.00      |
| 1115   | 8536     | 2 Way Switch 20A       | 20  | ₹ 80.00      |



| CODE   | HSN CODE | ITEM                   | PKG | GLOSSY WHITE |
|--|----------|------------------------|-----|--------------|
| <b>10A/20A SWITCHES (DIAMOND) 240V~ ( 1 MODULE )</b> |          |                        |     | — MRP/PC     |
| 1116   | 8536     | 1 Way Switch 10A       | 20  | ₹ 37.00      |
| 1117   | 8536     | 2 Way Switch 10A       | 20  | ₹ 60.00      |
| 1118   | 8536     | 1 Way bell push Switch | 20  | ₹ 58.00      |
| 1119   | 8536     | 1 Way Switch 20A       | 20  | ₹ 70.00      |
| 1120   | 8536     | 2 Way Switch 20A       | 20  | ₹ 85.00      |

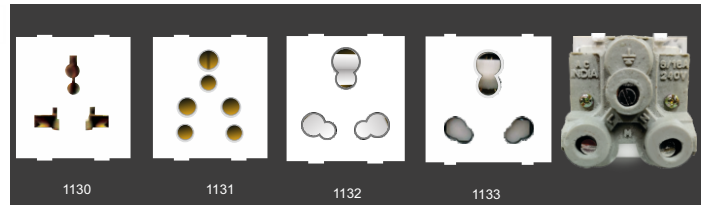


| CODE   | HSN CODE | ITEM                   | PKG | GLOSSY WHITE |
|--|----------|------------------------|-----|--------------|
| <b>10A/20A SWITCHES (FLYOVER) 240V~ ( 1 MODULE )</b> |          |                        |     | — MRP/PC     |
| 1121   | 8536     | 1 Way Switch 10A       | 20  | ₹ 70.00      |
| 1122   | 8536     | 2 Way Switch 10A       | 20  | ₹ 80.00      |
| 1123   | 8536     | 1 Way bell push Switch | 20  | ₹ 80.00      |
| 1124   | 8536     | 1 Way Switch 20A       | 20  | ₹ 85.00      |
| 1125   | 8536     | 2 Way Switch 20A       | 20  | ₹ 95.00      |

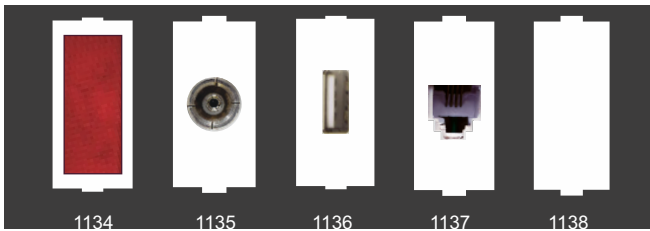


| CODE                                       | HSN CODE | ITEM                              | PKG | GLOSSY WHITE |
|--|----------|-----------------------------------|-----|--------------|
| <b>10A/13A SOCKET 240V~ ( 1/2 MODULE )</b> |          |                                   |     | MRP/PC       |
| 1126                                       | 8536     | 2PIN Socket 10A                   | 20  | ₹ 41.00      |
| 1127                                       | 8536     | 5 PIN Socket 10A                  | 10  | ₹ 62.50      |
| 1128                                       | 8536     | 5 PIN Socket 10A (with porcelain) | 10  | ₹ 65.00      |
| 1129                                       | 8536     | 5 PIN Socket (with shutter)       | 10  | ₹ 90.00      |

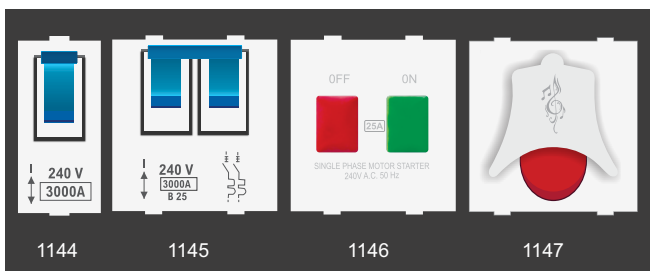
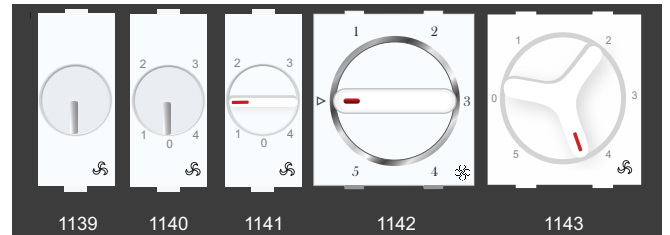
| CODE   | CODE | ITEM   | PKG | WHITE    |
|--|------|--|-----|----------|
| <b>13A/16A/20A SOCKET 240V~ ( 2 MODULE )</b> |      |  |     | MRP/PC   |
| 1130   | 8536 | 13Amp Conversion Socket (For international plugs)    | 10  | ₹ 115.00 |
| 1131   | 8536 | 16A SOCKET   | 10  | ₹ 130.00 |
| 1132   | 8536 | 20Amp Uni.Socket (H)(with shutter)                   | 10  | ₹ 140.00 |
| 1133   | 8536 | 25Amp Uni. Socket Heavy Duty With shutter(Porcelain) | 10  | ₹ 150.00 |



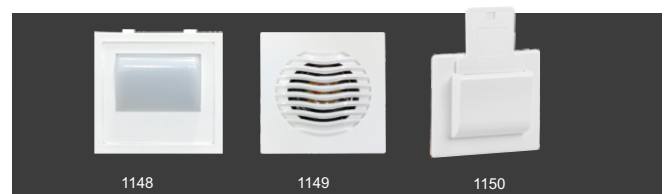
| CODE   | CODE | ITEM                    | PKG | WHITE    |
|--|------|-------------------------|-----|----------|
| <b>SUPPORTING ACCESSORIES 240V~ ( 1 MODULE )</b> |      |                         |     | MRP/PC   |
| 1134   | 8536 | 10Amp Indicator         | 20  | ₹ 55.00  |
| 1135   | 8536 | 10Amp Cable/T.V. Socket | 20  | ₹ 65.00  |
| 1136   | 8536 | USB Socket 3.0          | 20  | ₹ 410.00 |
| 1137   | 8536 | Telephone Jeck          | 20  | ₹ 65.00  |
| 1138   | 8536 | Blank Plate             | 100 | ₹ 10.00  |



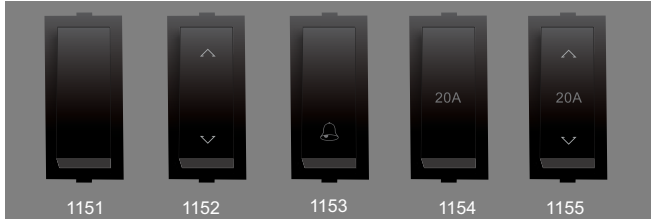
| CODE                                      | CODE | ITEM                    | PKG | WHITE    |
|---|------|-------------------------|-----|----------|
| <b>FAN REGULATOR 240V~ ( 1/2 MODULE )</b> |      |                         |     | MRP/PC   |
| 1139                                      | 8536 | 300w Dimmer Switch Type | 20  | ₹ 180.00 |
| 1140                                      | 8536 | Mini 4 Step Regulator   | 20  | ₹ 200.00 |
| 1141                                      | 8536 | Mini 4 Step Regulator   | 20  | ₹ 200.00 |
| 1142                                      | 8536 | 5 Step Regulator        | 10  | ₹ 250.00 |
| 1143                                      | 8536 | 5 Step Regulator (Y)    | 10  | ₹ 300.00 |



| CODE   | CODE | ITEM                    | PKG | WHITE    |
|--|------|-------------------------|-----|----------|
| <b>10-63A MCB/MOTER STARTER 240V~ ( 1/2 MODULE )</b> |      |                         |     | MRP/PC   |
| 1144   | 8536 | 6-32 Amp SP MCB Modular | 20  | ₹ 169.00 |
| 1145   | 8536 | 6-32 Amp DP MCB Modular | 10  | ₹ 319.00 |
| 1146   | 8536 | 32 Amp Moter Starter    | 10  | ₹ 375.00 |
| 1147   | 8536 | 2M DOOR BELL            | 10  | ₹ 100.00 |

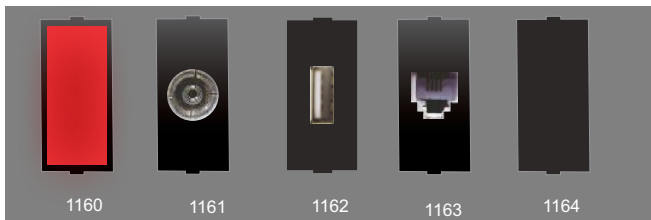


| CODE   | CODE | ITEM               | PKG | WHITE    |
|--|------|--------------------|-----|----------|
| <b>FOOT LIGHT/KEY TAG 240V~ ( 2 MODULE )</b> |      |                    |     | MRP/PC   |
| 1148   | 8536 | 2M FOOT LIGHT      | 10  | ₹ 165.00 |
| 1149   | 8536 | DOOR BELL BUZZER   | 10  | ₹ 300.00 |
| 1150   | 8536 | 32A KEY TAG SWITCH | 10  | ₹ 400.00 |



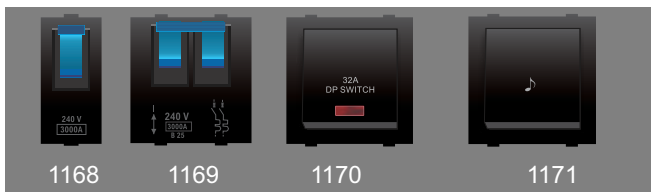
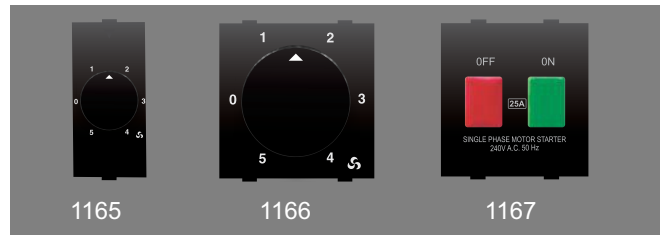
| CODE  | HSN CODE | ITEM                   | PKG | GLOSSY WHITE |
|---|----------|------------------------|-----|--------------|
| <b>10A/20A SWITCHES (ROCKER) 240V~ ( 1 MODULE )</b> |          |                        |     | — MRP/PC     |
| 1151  | 8536     | 1 Way Switch 10A       | 20  | ₹ 49.00      |
| 1152  | 8536     | 2 Way Switch 10A       | 20  | ₹ 80.00      |
| 1153  | 8536     | 1 Way bell push Switch | 20  | ₹ 80.00      |
| 1154  | 8536     | 1 Way Switch 20A       | 20  | ₹ 108.00     |
| 1155  | 8536     | 2 Way Switch 20A       | 20  | ₹ 115.00     |

| CODE  | CODE | ITEM   | PKG | WHITE    |
|---|------|--|-----|----------|
| <b>10A/16/20A SOCKET 240V~ ( 1 MODULE )</b> |      |  |     | MRP/PC   |
| 1156  | 8536 | 2PIN Socket 10A                                      | 20  | ₹ 45.00  |
| 1157  | 8536 | 5 PIN Socket 10A                                     | 10  | ₹ 65.00  |
| 1158  | 8536 | 13Amp Conversion Socket                              | 10  | ₹ 125.00 |
| 1159  | 8536 | 25Amp Uni. Socket (H)                                | 10  | ₹ 170.00 |
| 1159/1                                      | 8536 | 25Amp Uni. Socket Heavy Duty With shutter(Porcelain) | 10  | ₹ 185.00 |



| CODE   | CODE | ITEM                    | PKG | WHITE    |
|--|------|-------------------------|-----|----------|
| <b>SUPPORTING ACCESSORIES 240V~ ( 1 MODULE )</b> |      |                         |     | MRP/PC   |
| 1160   | 8536 | 10Amp Indicator         | 20  | ₹ 60.00  |
| 1161   | 8536 | 10Amp Cable/T.V. Socket | 20  | ₹ 65.00  |
| 1162   | 8536 | USB Socket 3.0          | 20  | ₹ 450.00 |
| 1163   | 8536 | Telephone Jack          | 20  | ₹ 75.00  |
| 1164   | 8536 | Blank Plate             | 100 | ₹ 15.00  |

| CODE                                      | CODE | ITEM                 | PKG | WHITE    |
|---|------|----------------------|-----|----------|
| <b>FAN REGULATOR 240V~ ( 1/2 MODULE )</b> |      |                      |     | MRP/PC   |
| 1165                                      | 8536 | 5 Step Regulator     | 20  | ₹ 250.00 |
| 1166                                      | 8536 | 5 Step Regulator     | 10  | ₹ 280.00 |
| 1167                                      | 8536 | 32 Amp Moter Starter | 10  | ₹ 490.00 |



| CODE  | CODE | ITEM                    | PKG | WHITE    |
|---|------|-------------------------|-----|----------|
| <b>10-63A MCB/ DP Switch 240V~ ( 1/2 MODULE )</b> |      |                         |     | MRP/PC   |
| 1168  | 8536 | 6-32 Amp SP MCB Modular | 20  | ₹ 180.00 |
| 1169  | 8536 | 6-32 Amp SP MCB Modular | 10  | ₹ 330.00 |
| 1170  | 8536 | 32A DP SWITCH           | 10  | ₹ 280.00 |
| 1171  | 8536 | 2M DOOR BELL            | 10  | ₹ 110.00 |

# Elegant

MODULAR SERIES



## INNOVATIVE TAKE ON CLASSIC IN

Redefining beauty forever, our FLYOVER Switches are loved by our customers. Get mesmerized by the brilliance of design & performance. Add charm with ever-lasting functionality to your walls as well your space. This modular range is crafted with the brilliance of innovation.

# QUALITY COMES FIRST

When you choose a BECARE product, you select unmatched international quality. That's because we use technologically advanced manufacturing processes at our state-of-the-art plant. To bring you a wide range of products that excel in quality and design,

at a price that is simply unbeatable. We are committed to bringing you the best, because that is what you deserve. We have specialized in the sphere of manufacturing our Modular Switches that are capable of with standing high overload conditions. The sufficient clearance between moving contacts and fixed contact avoids arcing during the operation of the switches.



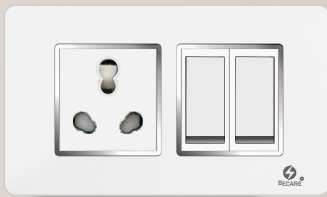
ELECTRIC SWITCHES  
& ACCESSORIES

IDEAS FOR  
wall



# alexa ELEGANT

S E R I E S



THE PRODUCT IS DESIGNED ESPECIALLY  
TO CHARM & FASCINATE YOUR SWEET HOME.



**BECARE**  
Electrical Solution

# ELEGANT

alexa- PLATES (Dimensions in mm)

## INNOVATION *New* IN MODULAR SERIES

### ► Vertical & Horizontal Installation

- Can be mounted vertically or horizontally
- Vertically mounted plates can fit in any space constraints
- Looks trendy & young

### ► Flat plate

- Looks Elegant & Beautiful

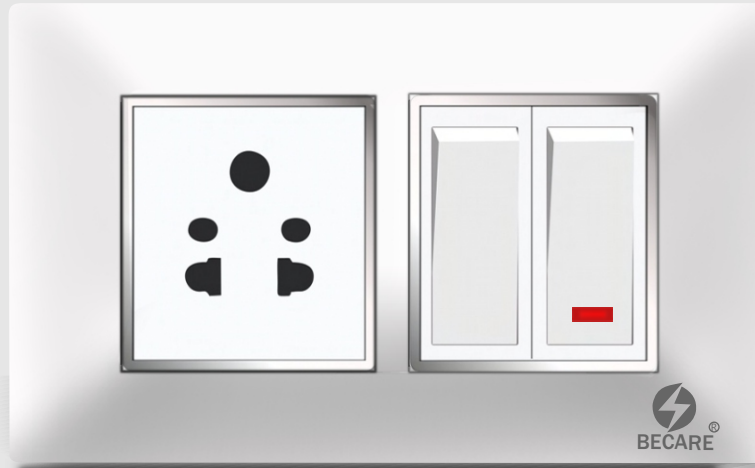


*Slim plate*

### ◆ FLAT SLIM PLATE WITH CHROME

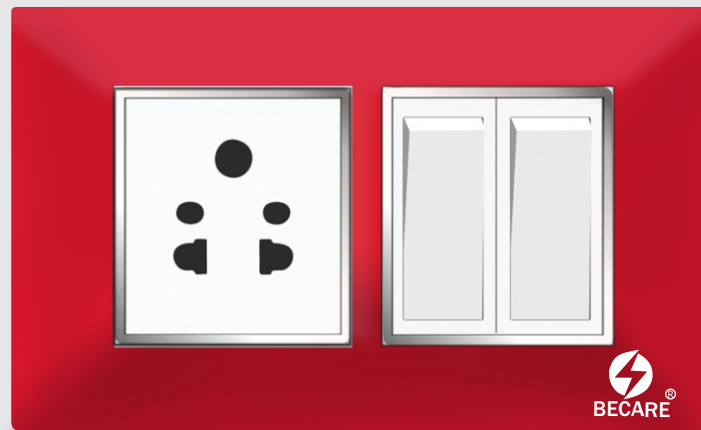
| ALEXA - COVER PLATES (with support frame) |         |         |          |          | WHITE PLATE WITH SILVER |                 |           |           |           |
|---|---------|---------|----------|----------|-------------------------|-----------------|-----------|-----------|-----------|
| MODULES ▶                                 | 1M      | 2M      | 3M*      | 4M       | 6M(H&V)                 | 8M(H&V)         | 12M (H)   | 16M*      | 18M (H)   |
| PRO. CODE                                 | 1172    | 1173    | 1174     | 1175     | 1176                    | 1177            | 1178      | 1179      | 1180      |
| PLATES ▼                                  | MRP ₹   | MRP ₹   | MRP ₹    | MRP ₹    | MRP ₹                   | MRP ₹           | MRP ₹     | MRP ₹     | MRP ₹     |
| GLOSSY                                    | 82.00   | 82.00   | 97.00    | 119.00   | 150.00                  | 175.00          | 240.00    | 260.00    | 320.00    |
| STD./MST PKG.                             | 10/400  | 10/400  | 10/400   | 10/400   | 10/400                  | 10/400          | 10/200    | 10/200    | 10/200    |
| SIZE (mm)                                 | 98 x 91 | 98 x 91 | 120 x 91 | 151 x 91 | 222 x 91                | 271x 91,158X165 | 225 x 162 | 275 x 275 | 225 x 230 |



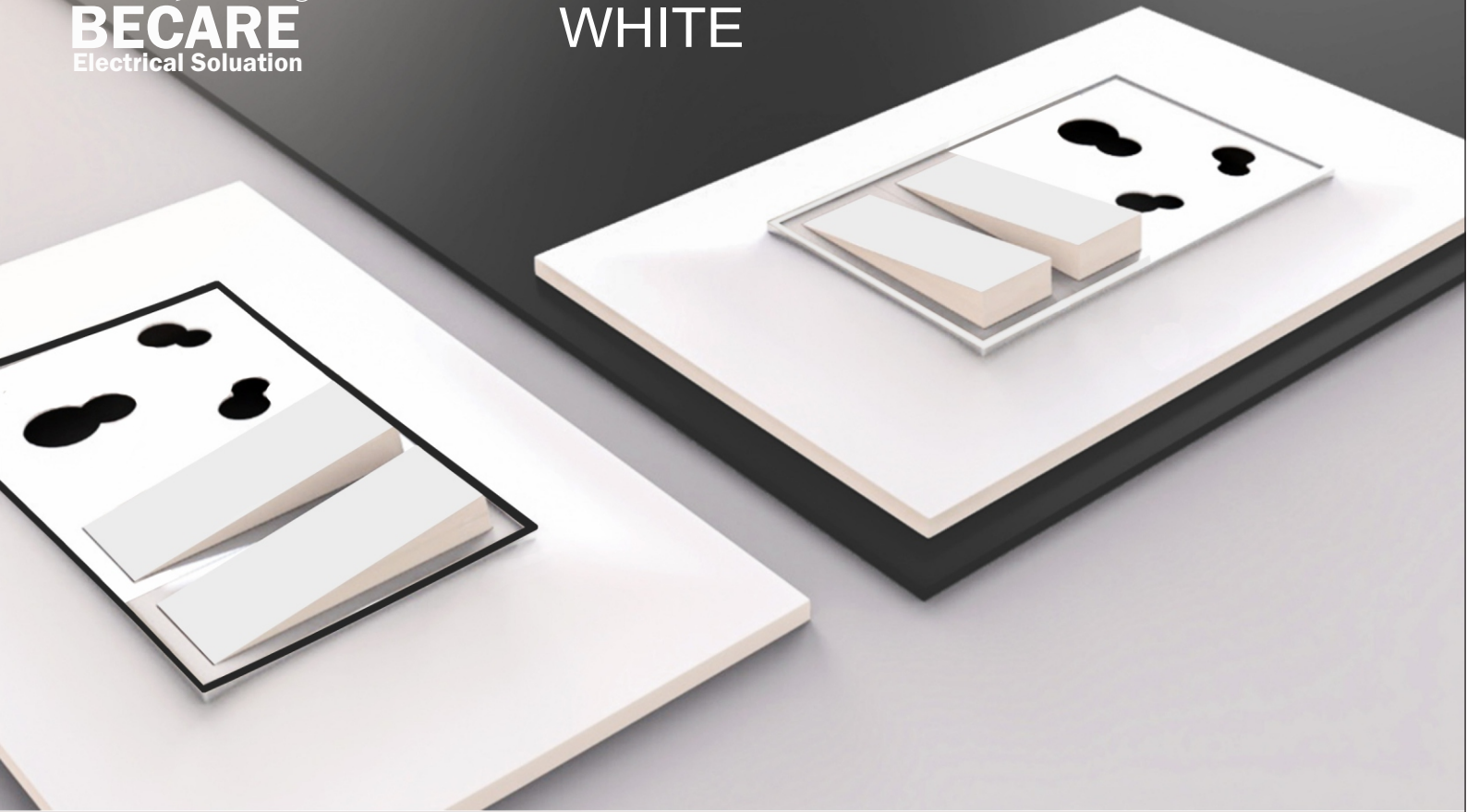


## Nexa | COVER PLATES

Fantastic NEXA Plate with exclusive ROCKER switch..  
The Royal touch and aesthetic finish is class apart.



It's Time For  
A BEAUTIFUL  
SWITCH



# DreamLiner

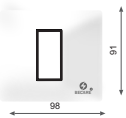
NEXA / CRYSTA WHITE SERIES

NEXA - COVER PLATES (w/o silver)

WHITE, RED, BLACK, GRAY W/O SILVER

| MODULES →          | 1M      | 2M      | 3M*      | 4M       | 6M       | 8M(H&V)         | 12M (H)   | 18M (H)   |
|--------------------|---------|---------|----------|----------|----------|-----------------|-----------|-----------|
| Pro.CODE           | 1181    | 1182    | 1183     | 1184     | 1185     | 1186            | 1187      | 1188      |
| PLATES ↓           | MRP ₹   | MRP ₹   | MRP ₹    | MRP ₹    | MRP ₹    | MRP ₹           | MRP ₹     | MRP ₹     |
| White (glossy)     | 60.00   | 60.00   | 75.00    | 85.00    | 115.00   | 145.00          | 170.00    | 280.00    |
| RED, GRAY (glossy) | 97.00   | 103.00  | 126.00   | 140.00   | 175.00   | 208.00          | 248.00    | 350.00    |
| STD./MST PKG.      | 10/400  | 10/400  | 10/400   | 10/400   | 10/400   | 10/400          | 10/200    | 10/200    |
| SIZE (mm)          | 98 x 91 | 98 x 91 | 120 x 91 | 151 x 91 | 222 x 91 | 271x 91,158X165 | 225 x 162 | 225 x 230 |

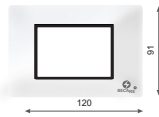
1 Module



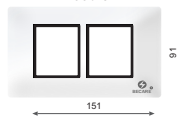
2 Module



3 Module



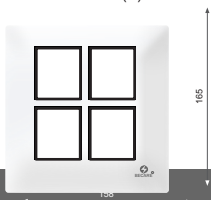
4 Module



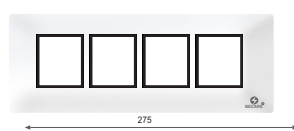
6 Module (H&V)



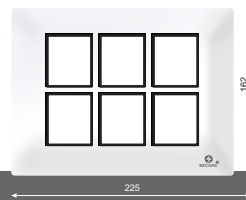
8 Module (V)



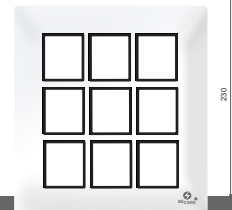
8 Module\*\* (H&V)



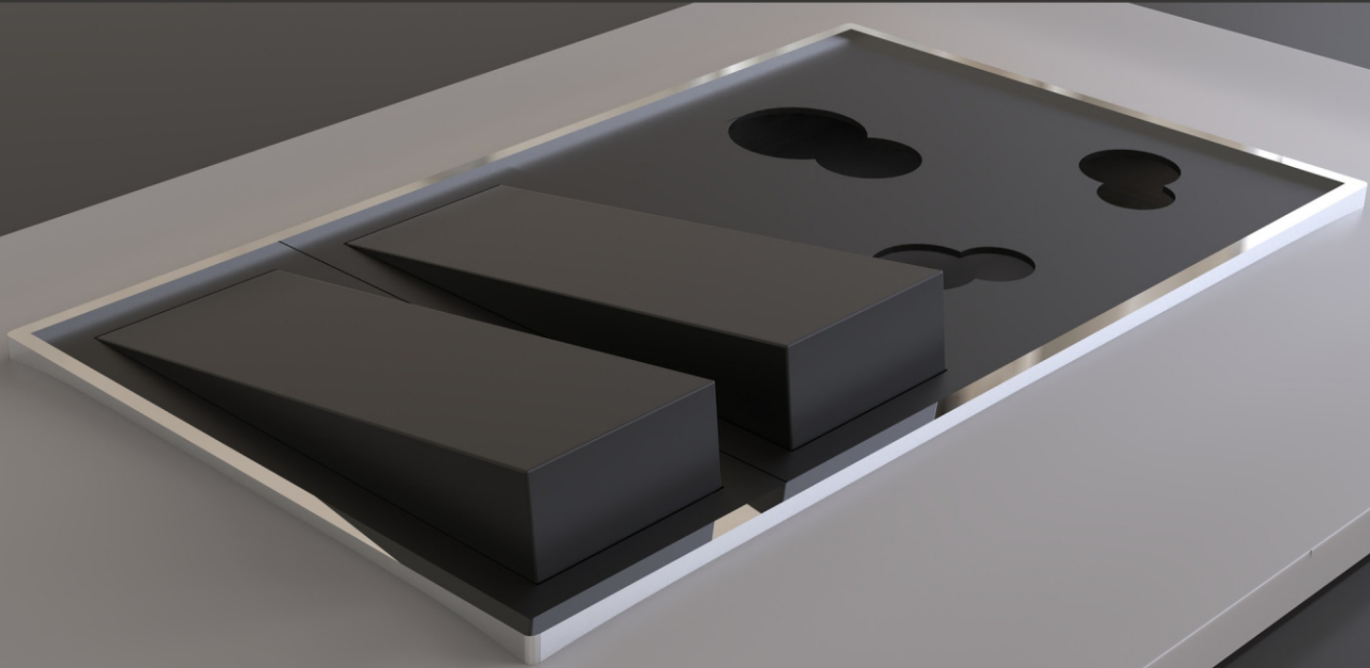
12 Module



18 Module



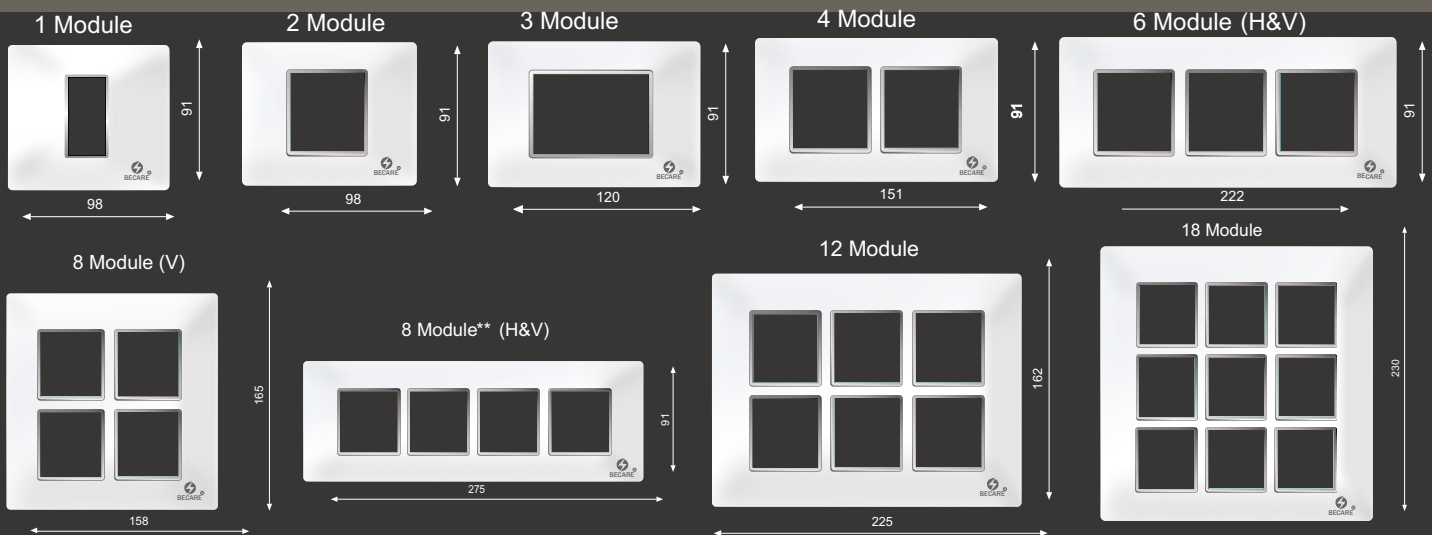
# Elegant WHITE & GREY



## NEXA - COVER PLATES (with Silver)

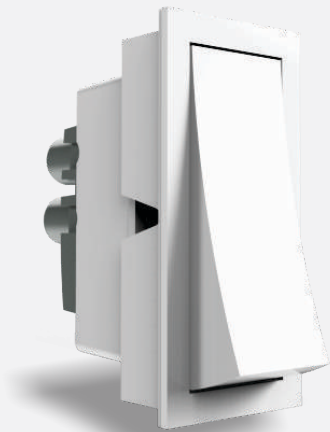
## WHITE, RED, BLACK, GRAY WITH SILVER

| MODULES ▶          | 1M      | 2M      | 3M*      | 4M       | 6M(H&V)  | 8M(H&V)         | 12M(H)    | 18M(H)    |
|--------------------|---------|---------|----------|----------|----------|-----------------|-----------|-----------|
| Pro.CODE           | 1189    | 1190    | 1191     | 1192     | 1193     | 8538            | 8538      | 1194      |
| PLATES ▼           | MRP ₹   | MRP ₹   | MRP ₹    | MRP ₹    | MRP ₹    | MRP ₹           | MRP ₹     | MRP ₹     |
| White (glossy)     | 70.00   | 70.00   | 80.00    | 105.00   | 135.00   | 160.00          | 200.00    | 280.00    |
| RED, GRAY (glossy) | 103.00  | 110.00  | 130.00   | 150.00   | 185.00   | 220.00          | 280.00    | 380.00    |
| STD.MST PKG.       | 10/400  | 10/400  | 10/400   | 10/400   | 10/400   | 10/400          | 10/200    | 10/200    |
| SIZE (mm)          | 98 x 91 | 98 x 91 | 120 x 91 | 151 x 91 | 222 x 91 | 271x 91,158X165 | 225 x 162 | 225 x 230 |



## ELEGANT SWITCH

Duluxe is a heavy duty modular switches with curve edge



WHITE



black

## FLATO SWITCH

Designed to remain flushed with the cover plate.  
Zero Degree is our take on Flat switches.  
Operates at gentle pressure.  
Zero Degree blends seamlessly in any home decor.

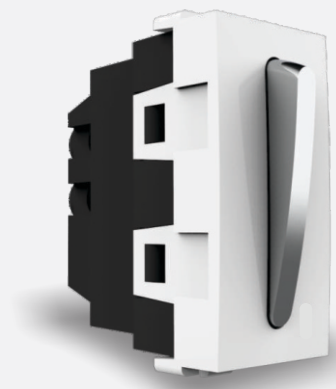


WHITE FLATO

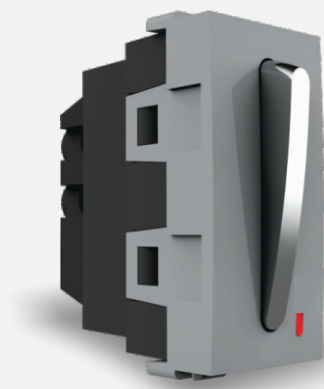


GREY FLATO

## FLYOVER SWITCH



WHITE

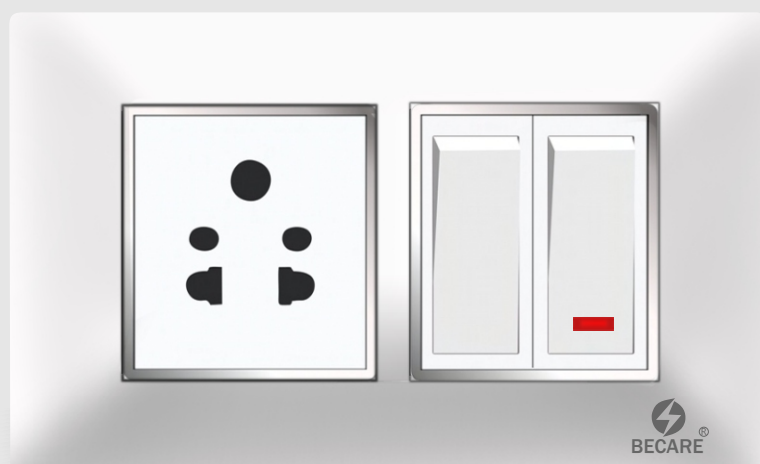
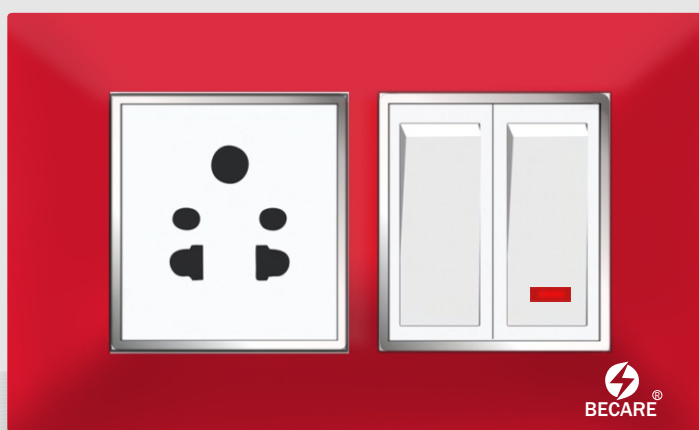


SILVER

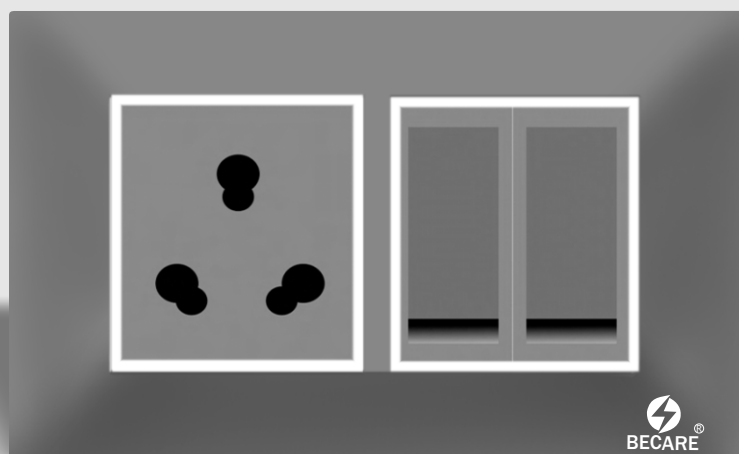
# Nexa MODULAR

## UPGRADE TO SIMPLICITY WITH GRACE

If you are looking for switches that give you simple but classy vibes, our Rocker Switches are for you. They are a contemporary choice for every modern styled home or office. Reflect your inner personality with our ever beautiful Rocker Switches.



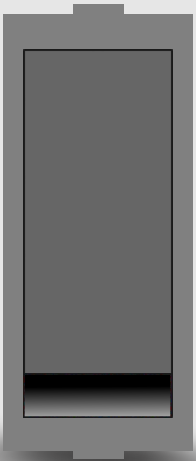
Designed specially for modern homes. Available in fascinating colours and beautifully textured glass finish polycarbonate cover.



# Nexa MODULAR

## ELEVATE TO LUSTROUS AND STUNNING DESIGNS

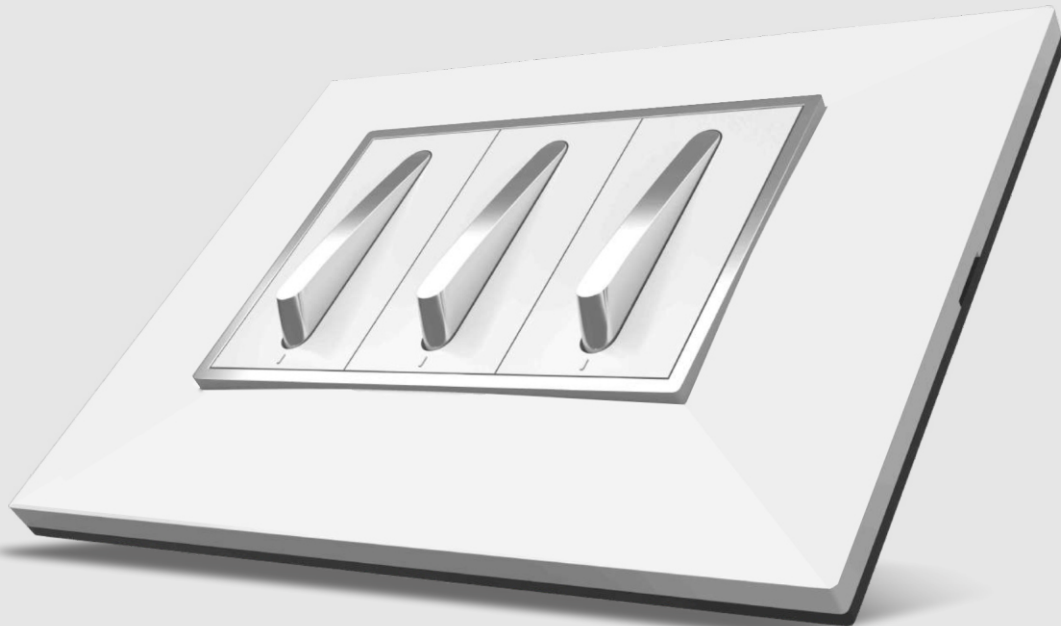
Flaunt the Flato sophisticated, sleek and gorgeous switches in your home or office. Our range from Flato Switches speaks of luxury and vogue at every glance. Addition of these to your walls will upgrade your interiors to the next, and probably the best level.



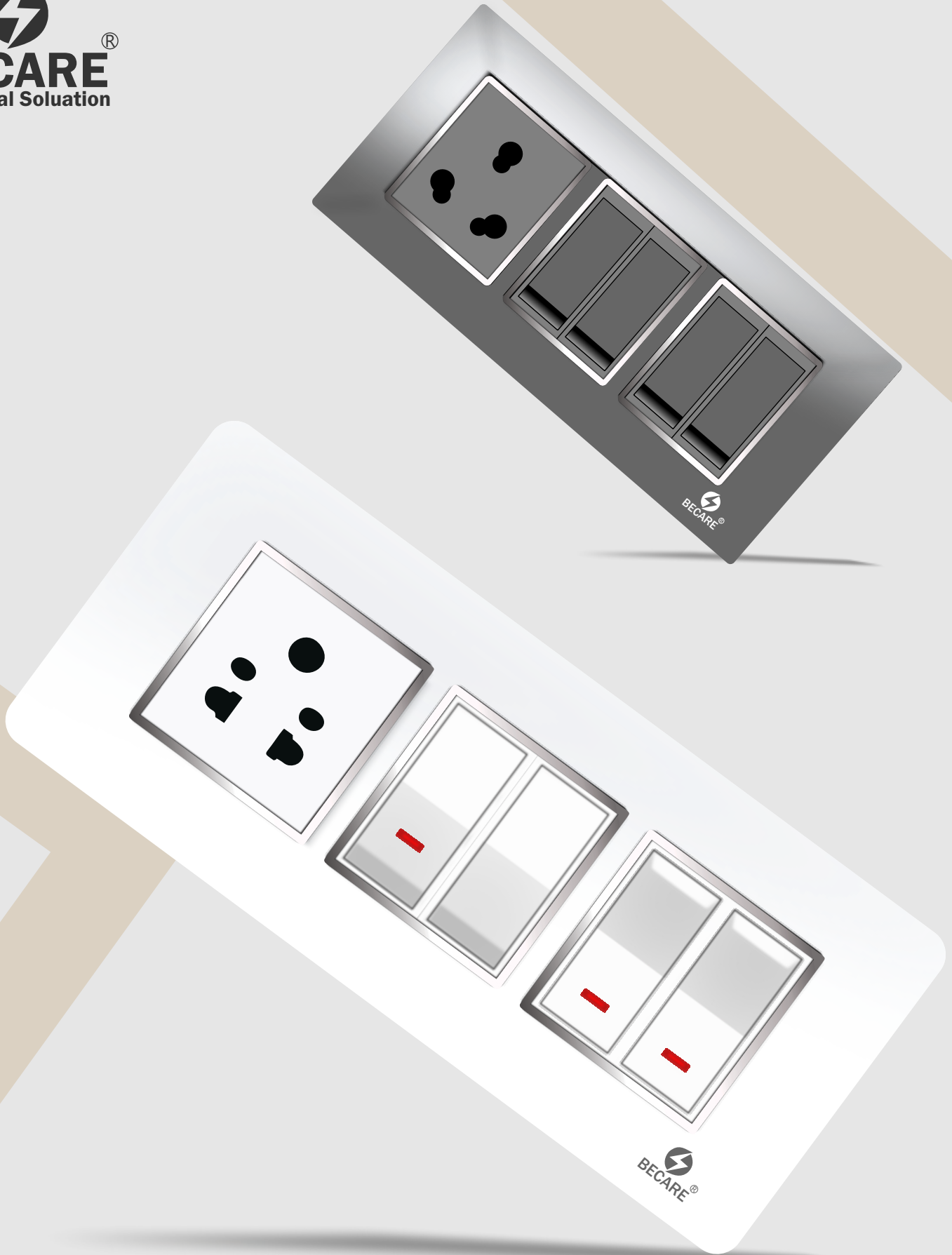
**Flato Switch**  
An essential item of décor for your walls.



## SIMPLICITY WITH THE STREAK OF MAGNIFICENCE







## INNOVATIVE TAKE ON CLASSIC INTERIORS

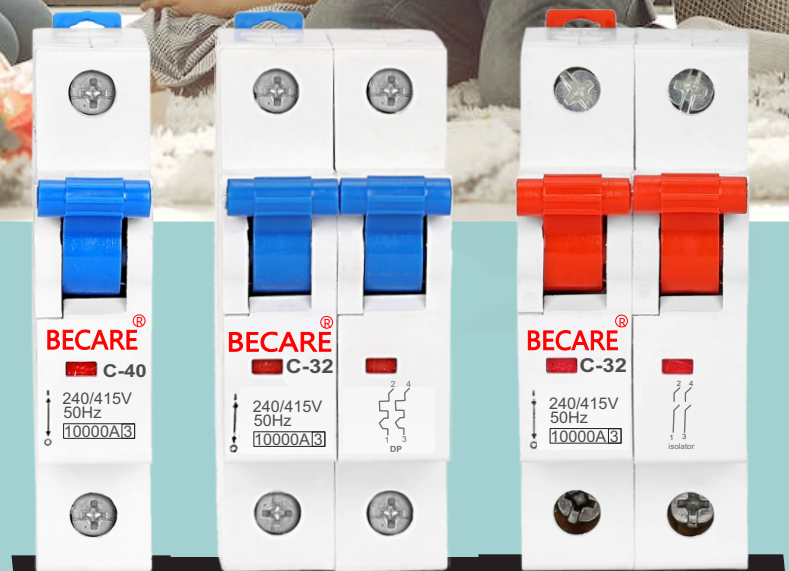
Redefining beauty forever, our Ever Switches are loved by our customers. Get mesmerized by the brilliance of design & performance. Add charm with ever-lasting functionality to your walls as well your space. This modular range is crafted with the brilliance of innovation.

# Nexa | COVER PLATES





# MCB'S



**A PERFECT BLEND OF**

Design & Technology

CIRCUIT PROTECTION DEVICES

IS/IEC:60898-1:2015



CM/L:8500012607

# BECARE is happening....



## TAKE YOUR FAMILY'S SAFETY TO THE NEXT LEVEL WITH SHINETECH

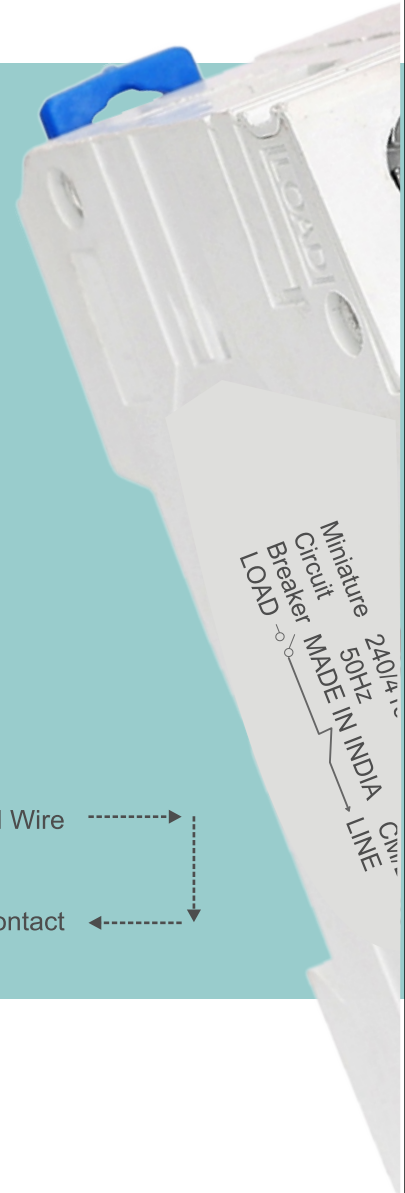
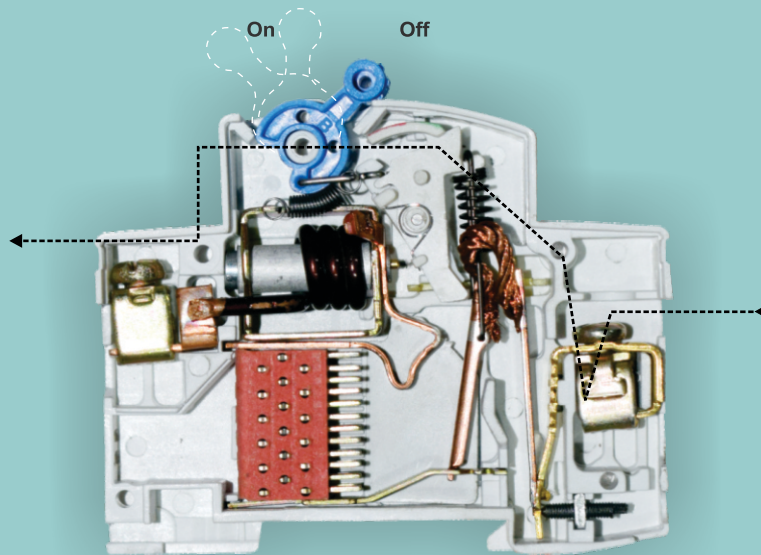
IS/IEC:60898-1:2015



CM/L:8500012607

- IP 20 PROTECTION
- ENERGY EFFICIENT
- TRIP FREE MECHANISM

### CURRENT FLOW OF MCB



### Salient Features :

- Current limiting clearance for short circuit fault clearance more than 10000A
- Trip free mechanism
- Tough fire resistant body
- Suitable for Din-bar mounting
- Wide range from 6A. to 40A.
- Convenient and sturdy terminals suitable for 1 to 125mm 2 Cables
- Wide range of power coated sheet metal and insulated enclosure also available



**BECARE**<sup>®</sup>  
Electrical Solution

# A PERFECT BLEND OF

Design & Technology



Get the best of both the world's  
affordability + reliability = Acceptability

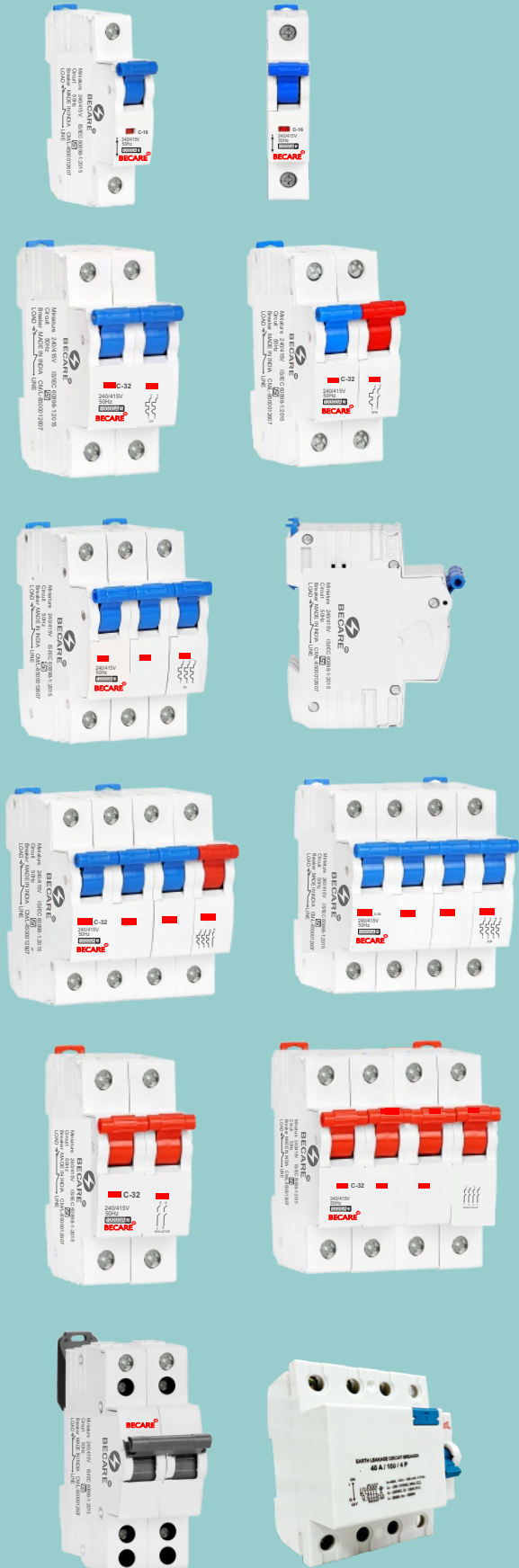
**SMART SAFETY SOLUTIONS  
FOR YOUR HOME...**

# MCB'S

IS/IEC:60898-1:2015



CM/L-8500012607



| CODE                                   | DESCRIPTION                       | MRP ₹<br>PER PCS. | PKG |
|--|-----------------------------------|-------------------|-----|
| <b>◆ SINGLE POLE (SP) MCB</b>          |                                   |                   |     |
| 1200                                   | 6 Amp - 32 Amp SP MCB             | 185.00            | 12  |
| 1202                                   | 40 Amp SP MCB                     | 190.00            | 12  |
| 1203                                   | 63 Amp SP MCB                     | 199.00            | 12  |
| 1204                                   | 6-63 Amp SP MCB Export (Big Body) | 199.00            | 12  |
| <b>◆ DOUBLE POLE (DP) MCB</b>          |                                   |                   |     |
| 1205                                   | 6 Amp - 32 Amp DP MCB             | 395.00            | 06  |
| 1206                                   | 40 Amp DP MCB                     | 475.00            | 06  |
| 1207                                   | 63 Amp DP MCB                     | 525.00            | 06  |
| 1208                                   | 32 Amp DP MCB Enclosure           | 525.00            | 05  |
| <b>◆ SINGLE POLE NEUTRAL (SPN) MCB</b> |                                   |                   |     |
| 1209                                   | 6 Amp - 32 Amp SPN MCB            | 390.00            | 06  |
| 1210                                   | 40 Amp SPN MCB                    | 445.00            | 06  |
| 1211                                   | 63 Amp SPN MCB                    | 480.00            | 06  |
| <b>◆ THREE POLE (TP) MCB</b>           |                                   |                   |     |
| 1212                                   | 6 Amp - 32 Amp TP MCB             | 425.00            | 04  |
| 1213                                   | 40 Amp TP MCB                     | 600.00            | 04  |
| 1214                                   | 63 Amp TP MCB                     | 625.00            | 04  |
| <b>◆ THREE POLE NEUTRAL (TPN) MCB</b>  |                                   |                   |     |
| 1215                                   | 6 Amp - 32 Amp TPN MCB            | 715.00            | 03  |
| 1216                                   | 40 Amp TPN MCB                    | 800.00            | 03  |
| 1217                                   | 63 Amp TPN MCB                    | 950.00            | 03  |
| <b>◆ FOUR POLE (FP) MCB</b>            |                                   |                   |     |
| 1218                                   | 6 Amp - 32 Amp FP MCB             | 715.00            | 03  |
| 1219                                   | 40 Amp FP MCB                     | 825.00            | 03  |
| 1220                                   | 63 Amp FP MCB                     | 975.00            | 03  |
| <b>◆ ISOLATOR</b>                      |                                   |                   |     |
| 1221                                   | 40 Amp DP Isolator                | 340.00            | 06  |
| 1222                                   | 63 Amp DP Isolator                | 360.00            | 06  |
| 1223                                   | 40 Amp FP Isolator                | 610.00            | 03  |
| 1224                                   | 63 Amp FP Isolator                | 650.00            | 03  |
| <b>◆ MCB CHANGEOVER / ELCB</b>         |                                   |                   |     |
| 1225                                   | 40Amp Changeover                  | 575.00            | 06  |
| 1226                                   | 63Amp Changeover                  | 645.00            | 06  |
| 1227                                   | 40Amp DP ELCB                     | 1350.00           | 06  |
| 1228                                   | 63Amp DP ELCB                     | 1350.00           | 06  |
| 1229                                   | 40Amp FP ELCB                     | 2250.00           | 03  |
| 1230                                   | 63Amp FP ELCB                     | 2250.00           | 03  |

#### TERMS & CONDITION :-

1. All M.R.P. are Inclusive of GST.
2. Subject to Delhi Jurisdiction only.
3. Rate are subject to change without prior notice.
4. Goods will be supplied according to stock position.
5. Our responsibility ceases as soon as goods leaves our godowns.
6. Item shown in the catalogue may be differ as actual products.

All our advertising and promotional material are complementary to our customer and the price of same is inclusive in the price list.



#### Warranty Policy :-

- All switches and sockets carry a warranty of 10 years from the date of purchase except L.E.D. indicators, Regulators, AC Starters, MCB, and Electronic Items.
- L.E.D. Indicators, Regulators, AC Starters and Electronic Items carry a warranty of 2 years from the date of purchase.
- The company undertakes to replace or repair products at its discretion. The warranty does not cover metal wall boxes.
- The warranty is applicable only against manufacturing defects or faulty workmanship.
- The warranty is however subject to the provision of proper usage and does not cover surface coated products, normal wear and tear of parts, defects arising out of fire, accident, voltage fluctuations and willful or accidental damage.
- The manufacturer will not be liable for any consequential loss, injury or damages attributable to defect or failure of its products.
- The company reserves the right to change/improve the design, without prior notice. In such cases, replacements shall be carried out with the design prevailing at that point in time.



Mfg. By:

**BECARE ELECTRIC**

Add. : Mangolpuri,north west Delhi-110034

Customer Care helpline No. : 9643997102

[www.becareelectric.com](http://www.becareelectric.com)

Dealer / Distributor



Web. :- [www.becareelectric.com](http://www.becareelectric.com)

